

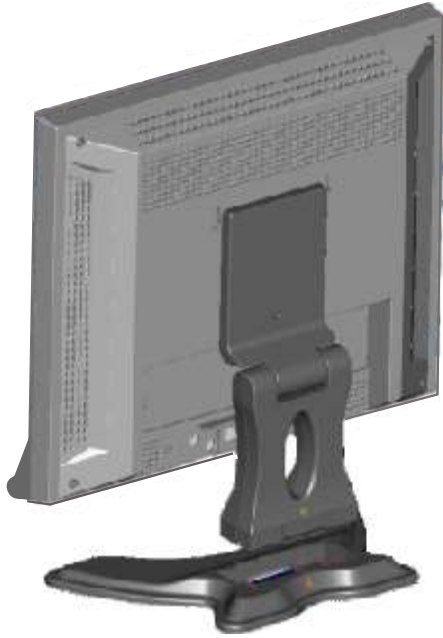
Rosewill

COLOR TFT-LCD MONITOR USER'S MANUAL

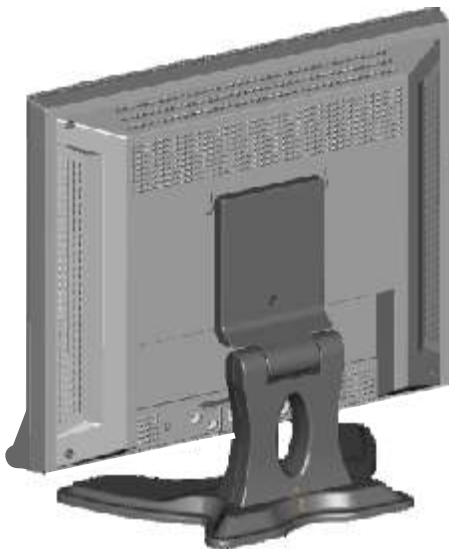


MODEL : R701N
Ref: MAN00283
Versión: 1.0
ENGLISH-:Español

SETUP: Please follow the steps one by one to setup the base; then the monitor can be used.



step1



step2

Menu:

1. Introduction

| | |
|---------------------------|--------|
| Product Description | Page.2 |
| Package Contents | Page.2 |
| Product Features..... | Page.2 |
| Cleaning..... | Page.2 |
| Precautions..... | Page.3 |

2. Control Function

| | |
|------------------|--------|
| OSD Button..... | Page.5 |
| OSD Control..... | Page.6 |
| HOT Control..... | Page.7 |

3. Inputs Diagram

| | |
|-------------|---------|
| Inputs..... | Page. 8 |
|-------------|---------|

4. Display Angle

Page. 9

5. Product Specification

Page. 10

6. Display Modes

Page. 11

Introduction

Product Description

Congratulations on your purchasing this new generation of monitor. Your LCD monitor incorporates high quality display into a small light weighted module. It has power-saving capabilities and emits no X-ray radiation. You will certainly benefit from this monitor in lots of way; to name some of them , comfort safety and environmental protection.

This LCD monitor incorporates 17" color active matrix thin-film-transistor (TFT) liquid crystal display to provide superior display performance. A maximum resolution of XGA 1280x1024 is ideal for displaying complex graphics and high definition images. Other outstanding designs that enhance this LCD monitor's performance are Plug & play compatibility, audio system and OSD (On Screen Display) controls.

Package Contents

Included with your LCD monitor are following items :

- 17" TFT LCD monitor
- 15 pin D-sub signal cable
- AC power cable
- User's manual
- Sound Card Cable (Option)

Product Features

- High contrast color TFT LCD display support resolution up to XGA 1280*1024
- Compatible with IBM VGA, VESA, and Macintosh standards.
- Imbedded audio system provides sound performance. (Option)
- AV-IN and S-video use. (Option)
- Audio-1, and PC line in sound application. (Option)

Cleaning

- Gently wipe screen with a clean camel hair lens brush, or soft, clean lint-free cloth.
- This removes dust and other particles that can scratch the screen.
- Do not apply pressure to the screen surface when wiping it clean.
- Do not pour or spray any liquid directly onto the screen or case of the LCD monitor.
- Chemical cleaners have been reported to damage the screen or the LCD monitor.

Precautions

- Read all these instruction and save them for later use.
- Follow all warning and instructions on theproduct.

Product-

- Do not block the vent holes in the case.
- Do not insert sharp objects or spill liquid into the LCD monitor through cabinet slots.
They may cause accident fire, electric shock or failure.
- Disconnect the power plug from the AC outlet if you will not use if for an indefinite period of time.
- Do not attempt to service this product yourself, as opening or removing covers may expose you to dangerous voltage points or other risks.
- Do not touch the screen directly with your fingers. You may damage the screen, and the oil from your skin is difficult to be removed.
- Do not apply pressure to screen. The LCD is very delicate.

Power

- Use the type of power indicated on the marking label.

Plugs

- Do not remove any of the prongs of the monitor's three-pronged power plug.
- Disconnect the power plug from the AC outlet under following conditions:
- If you will not use it for an indefinite period time.
- When the power cord or plug is damaged or frayed.
- If the product does not operate normally when the operating instructions aye followed.

Adjust only those controls may result in damage and will often require extensive work by a qualified technician to restore the product to normal operation.

- If the product has been dropped or the cabinet has been damaged.
- If the product exhibits a distinct change in performance, indicating a need for service.

Power and extension cords

- Do not allow anything to rest on the power cord.
- Do not locate this product where persons will walk on the cord.
- Use the proper power cord with correct attachment plug type. If the power source is 120V AC, use a power cord that has UL and C-UL approvals. If the power source is a 240V AC supply, use the tandem (T blade) type attachment plug with ground conductor power cord that meets the respective European country's safety regulations, such as VDE for Germany.

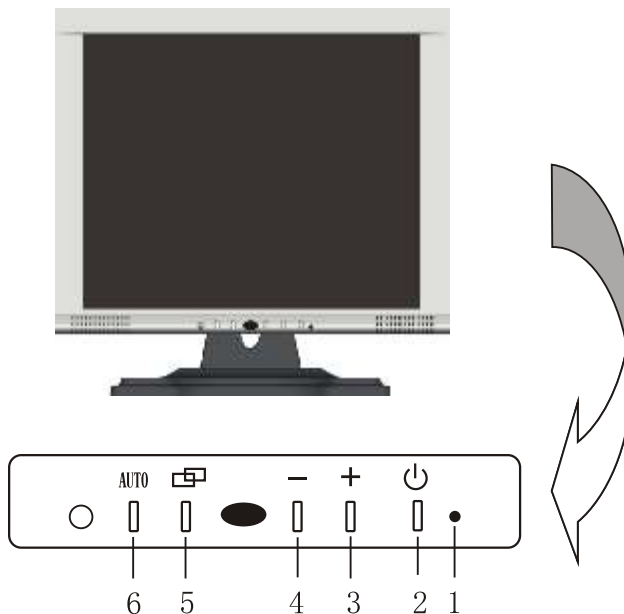
- Do not overload wall outlets or power cords. Ensure that the total of all units plugged into the wall outlet does not exceed 10 amperes.
- Ensure that the total ampere ratings on all units plugged into the extension cord is not above the cord's rating.
- If the power supply cord, which came with your monitor, is to be connected to the PC instead of the wall outlet, this equipment is to be used with UL/TUV approved computers with receptacle rated 100~240V AC, 50/60Hz, 1.0A (minimum).

Environment

- Place the monitor on a flat and leveled surface.
- Place the monitor in a well-ventilated place.
- Keep the monitor away from:
Overly hot, cold or humid places, places directly under sunlight, dusty surroundings, equipment that generate strong magnetic fields.

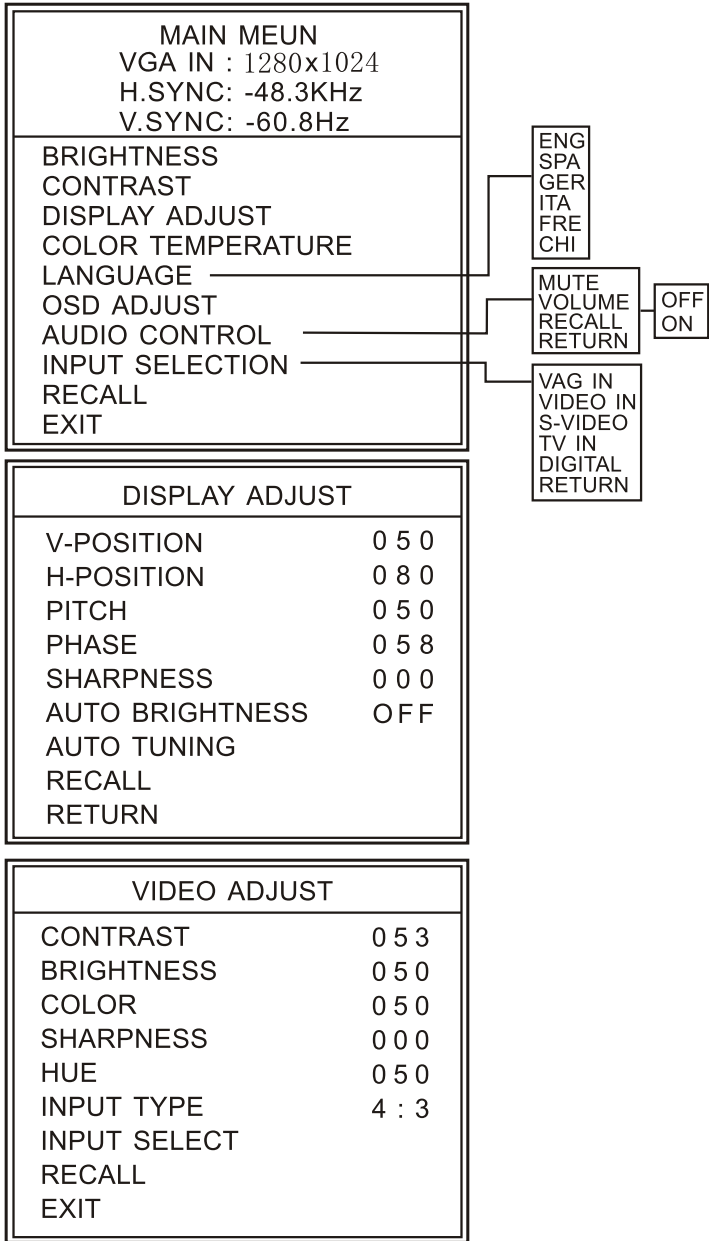
Control Function

Control Button Front View



1. Power LED : This power LED indicates different status when this unit operates in different modes
2. Power switch : pressing this button turns the display system power on or off
3. Increase : This button is used to adjust the increasing Value of selected OSD control option and Volume select quickly when have Audio in function
4. Decrease : This button is used to adjust the decreasing Value of selected OSD control option directly into volume control function.
5. OSD Menu/select : Pressing this button pops up the OSD menus on the screen and used to select the OSD control options on the screen .
6. Auto tuning : Automatically sizes, centers and fine tunes the Video signal to eliminate "noise" and distortion .

OSD CONTROL



BRIGHTNESS : Adjust background black level of the screen image

CONTRAST : Adjust foreground white level of the screen image

H. POSITION : Move the screen image left or right

V. POSITION : Move the screen up and down

PITCH : Adjust image distortion appearing as vertical bars or "noise" on the screen

PHASE : Adjust image distortion appearing as horizontal "noise" on the screen

SHARPNESS : Adjust the clarity and focus of the screen images

COLOR METER : Adjust color temperatures for users

LANGUAGE : Allow you to choose among five languages as English, French, German, Italian, and Spanish

AUDIO CONTROL : Switch muting ON/OFF and Volume control

INPUT SELECTION : Select VGA, VIDEO IN, S-VIDEO, TV IN, DVI signal input

RECALL : Return all controls back to factory setting

HOT KEY CONTROL

1. VGA HOT KEY

UP KEY ←→ BRIGHTNESS

DOWN KEY ↔ CONTRAST

2. VGA +A HOT KEY

UP KEY ←→ VOLUME INCREASE

DOWN KEY ↔ VOLUME DECREASE

3. VGA +A+TV HOT KEY

UP KEY ←→ CHANNEL INCREASE

DOWN KEY ↔ CHANNEL DECREASE

Inputs Diagram

Inputs



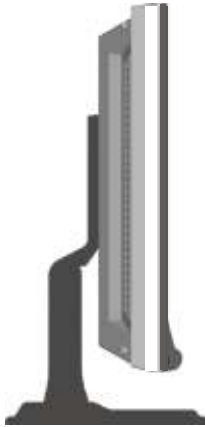
1. AC POWER INPUT : AC inlet for 110/220V power system
2. AUDIO OUTPUT (LINE OUT) : Mic out for recording
3. AUDIO 1 : This can be connected to the RCA connector audio out of any sound resource
4. LINE IN : This can be connected to the stereo audio out of any sound resou
5. PC IN : This can be connected with the D_Sub 15 pin signal connector
6. VIDEO 1 : This can be connected to the RCA connector video out of any video resource
7. S_VIDEO : This can be connected to the S_connector video_out of anyvideo resource
8. DVI : This can be connected with digital signal

Display Angle

Tilting

For viewing clarity you can tilt the LCD forward (up to 3 degrees) or backward (up to 35 degrees).

Down:3 °



Up:35°



Product Specification

| Spec \ Model | PC |
|----------------------|--|
| LCD Display | 17"active matrix TFT LCD panel |
| Pixel pitch | 0.297(H)x0.297(V)mm |
| Max. Resolution | 1280(H)x1024(V)XGA |
| Dimensions | 400(V)x377(H)x182(D)mm |
| Packing Dimensions | 470(V)x410(H)x160(D)mm |
| Contrast Ratio | <input type="checkbox"/> 300:1 <input type="checkbox"/> 350:1 <input type="checkbox"/> 400:1 |
| Brightness | <input type="checkbox"/> 250cd/m ² <input type="checkbox"/> 200cd/m ² |
| Response Time | 10/30ms |
| Display Color | 16.777M |
| Viewing Angle | L/R <input type="checkbox"/> 160° <input type="checkbox"/> 140° <input type="checkbox"/> 120° U/D <input type="checkbox"/> 160° <input type="checkbox"/> 120° <input type="checkbox"/> 110° |
| PC Interface | Video Sync. RGB analog 0.7 V p p TTL positive or negative |
| Display Mode | VGA/SVGA/XGA |
| PC Connector | 15min D-sub |
| Front Control | Power on/off with LED, Menu select, Up/Down Adjustment, Auto tuning, Light sensor |
| OSD Adjustment | Contrast, Brightness, Auto tuning, Phase, H-Position, V-Position, Input selection |
| Power Adapter | AC Input:100~240V/1.8A, 50-60Hz DC Output:12V/4.0A Temperature:0°C ~ 50°C |
| Operating Conditions | Humidity:20%~80% Temperature:-20°C ~ 60°C |
| Storage Conditions | Humidity :20%~80% |
| Certification | FCC(DOC), CE-B,VCC-I, UL,CSA, TUV/GS |
| Weight | N/W :5.75Kgs G/W :5.75Kgs |

Display Modes

| Modelo | Resolución | H Freq(kHz) | V Freq(Hz) |
|--------|------------|-------------|-------------|
| 0 | 720*350 | 31.469 | 70.087 |
| 1 | 640*480 | 31.469 | 59.940 |
| 2 | 640*480 | 35.000 | 66.667 |
| 3 | 640*480 | 37.861 | 72.809 |
| 4 | 640*480 | 37.500 | 75.000 |
| 5 | 720*400 | 31.469 | 70.087 |
| 6 | 800*600 | 35.156 | 56.250 |
| 7 | 800*600 | 37.879 | 60.317 |
| 8 | 800*600 | 48.077 | 72.188 |
| 9 | 800*600 | 46.875 | 75.000 |
| 10 | 832*624 | 49.750 | 74.500 |
| 11 | 1024*768 | 48.363 | 60.004 |
| 12 | 1024*768 | 56.476 | 70.069 |
| 13 | 1024*768 | 58.038 | 71.918 |
| 14 | 1024*768 | 60.023 | 75.029 |
| 15 | 1280*1024 | 64.000 | 60.000 |
| 16 | 1280*1024 | 80.000 | 75.000 |

Service Information

Service

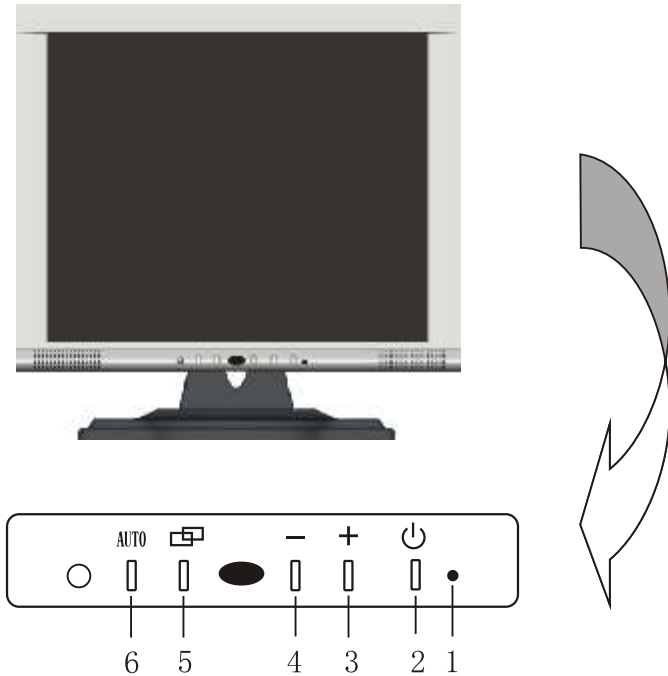
When you buy this excellent LCD Monitor, you are entitle to the warranty provide by us, please contact us you need for any information or helps of our products. Thank you again for buying our products.

Menú:

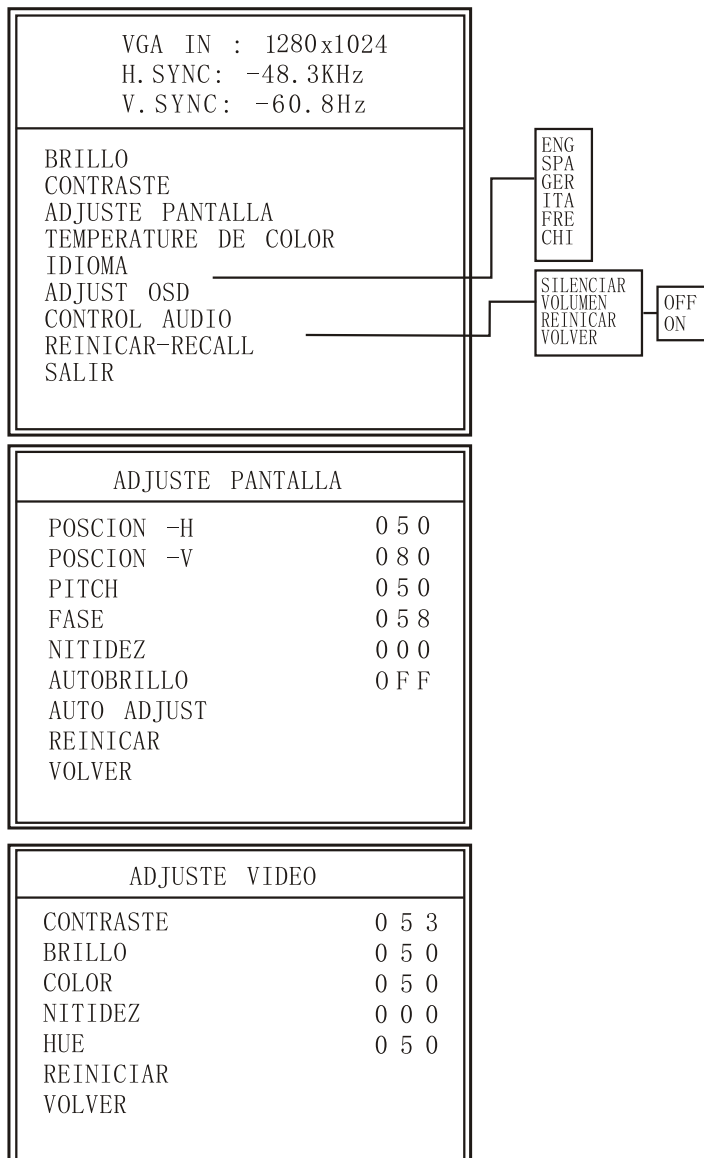
| | |
|---|---|
| Controles | 2 |
| Controles del panel frontal | 2 |
| Controles OSD | 3 |
| Controles de la parte trasera | 5 |
| Ángulo de rotación de la pantalla | 6 |
| Especificaciones técnicas | 7 |
| Modos de visualización | 8 |

Controles

Controles del panel frontal



1. Indicador luminoso de neccendido/apagado.
2. Botón de encendido/apagado.
3. Botón “+” para incrementar el valor de un elemento del menú OSD, e incrementar el volumen de los altavoces.
4. Botón “-” para disminuir el valor de un elemento del menú OSD, también sirve para disminuir el volumen de los altavoces.
5. Menú OSD. Visualiza la pantallas de menú OSD.
6. Auto tuning. Automaticamente ajusta los valores de video idóneos para eliminar el ruido y distorsión.

Controles OSD

BRILLO: ajusta el nivel de brillo de la imagen.

CONTRASTE: ajusta el nivel de blanco de la pantalla.

POSICION-H: desplaza la pantalla a izquierda o derecha con las teclas “+” o “-”.

POSICION-V: Ajusta la pantalla arriba o abajo con las teclas “+” o “-”.

FASE: ajusta la distorsión de la imagen eliminando el ruido horizontal.

NITIDEZ (SHARPNESS): ajusta la claridad y enfoque de la pantalla (los fillos de las imágenes).

TEMPERATURA DE COLOR: permite ajustar la temperatura de color de las imágenes.

IDIOMA: permite seleccionar los diferentes idiomas para el menú OSD.

CONTROL AUDIO: permite seleccionar silenciar ON/OFF y el control de volumen.

REINICIAR (RECALL): reestablece todos los valores a su estado inicial.

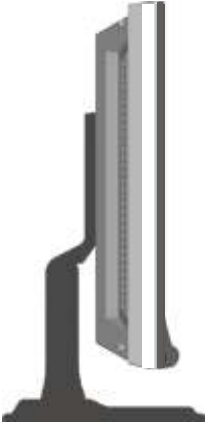
Controles de la parte trasera



1. CONECTOR DE SEÑAL DE ENTRADA AC: entrada 110/220V.
2. Conector de altavoces a salida de audio de tarjeta de sonido (CPU).
3. VGA (conexión a PC).

Ángulo de rotación del monitor

Down:3 °



Up:35°



Especificaciones técnicas

| | |
|-------------------------------|---|
| Pantalla | TFT LCD 17" matriz activa |
| Tamaño pixel | 0.297(H)x0.297(V)mm |
| Frec. H/V | H:24~81KHz V:50~75Hz |
| Resolución | 1280(H)x1024(V)x XGA |
| Dimensiones | 400(alto)x377(ancho)x182(fondo)mm |
| Contraste | 400:1 |
| Brillo | 250cd/m ² |
| Tiempo de resp. | 15/10ms |
| Color | 16.777M |
| Ángulo visión | |
| Izq/Dercha | 160° |
| Arriba/Abajo | 160° |
| PC Interface | RGB analog 0.7V p p |
| VIDEO | TTL positivo o negativo |
| Sync. | VGA/SVGA/ XGA |
| Conector PC | 15min D-sub |
| Controles frontal | Encendido/apagado, menú OSD, ajuste + o - |
| Ajuste OSD | Brillo, contraste, autoajuste, fase Posición V y H |
| Adapatador corriente | Entrada AC: 100-240V/1.8A, 50-60Hz Salida DC: 12V/4.0A |
| Condiciones de operación | Temperatura: 10a 40°. Humedad: 0% a 90% |
| Condiciones de almacenamiento | Temperatura: -20 a 60°. Humedad: 0% a 90% |
| Certificaciones | FCC(DOC), CE-B, VCC-I, UL, CSA, TUV/GS |
| Peso | 5.75Kg aprox. |

Modos de visualización

| Modelo | Resolución | H Freq(kHz) | V Freq(Hz) |
|--------|------------|-------------|-------------|
| 0 | 720*350 | 31.469 | 70.087 |
| 1 | 640*480 | 31.469 | 59.940 |
| 2 | 640*480 | 35.000 | 66.667 |
| 3 | 640*480 | 37.861 | 72.809 |
| 4 | 640*480 | 37.500 | 75.000 |
| 5 | 720*400 | 31.469 | 70.087 |
| 6 | 800*600 | 35.156 | 56.250 |
| 7 | 800*600 | 37.879 | 60.317 |
| 8 | 800*600 | 48.077 | 72.188 |
| 9 | 800*600 | 46.875 | 75.000 |
| 10 | 832*624 | 49.750 | 74.500 |
| 11 | 1024*768 | 48.363 | 60.004 |
| 12 | 1024*768 | 56.476 | 70.069 |
| 13 | 1024*768 | 58.038 | 71.918 |
| 14 | 1024*768 | 60.023 | 75.029 |
| 15 | 1280*1024 | 64.000 | 60.000 |
| 16 | 1280*1024 | 80.000 | 75.000 |

